

# FITC-QC Slide™

---

If your microscope was out of alignment, would you know it?

**Probably not.**

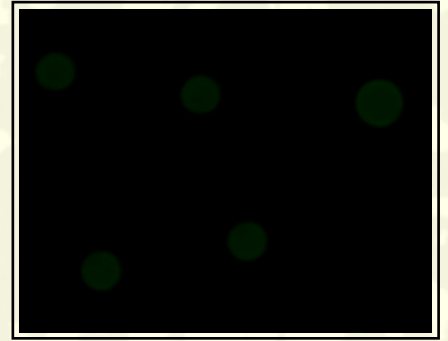
What's available to determine whether your scope is aligned properly?

**Immuno Concepts'  
FITC QC Slide™**

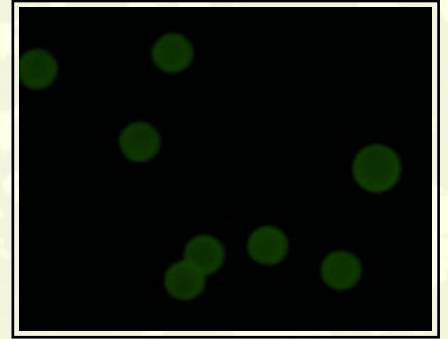
The patented microbeads used on IC's FITC-QC Slide™ are standardized for fluorescent intensity and bead size using flow cytometry technology. This conforms to the NCCLS-approved guidelines as outlined in document I/LA2-A.

- First, place slide under microscope at 200x magnification.
- Beginning with the +/- well, view wells in ascending order: 1+, 2+, etc.
- The FIRST well in which beads are visible is endpoint.

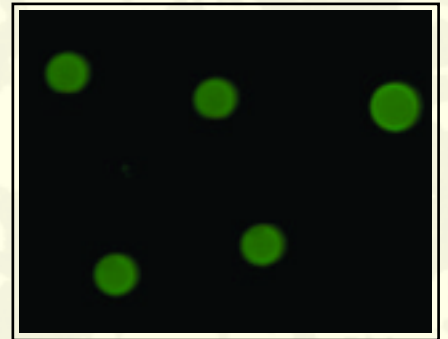
+/-



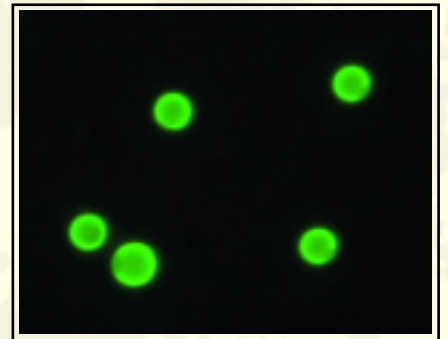
1+



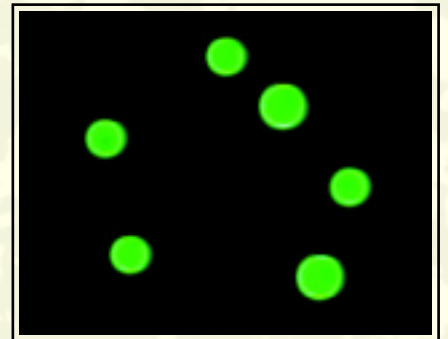
2+



3+



4+



---

# FITC QUALITY CONTROL SLIDE

---

Section 6 of the NCCLS document "Quality Assurance for the Indirect Immunofluorescence Test for Autoantibodies to Nuclear Antigen (IF-ANA); Approved Guideline" I/LA2-A Vol 16, No. 11 December 1996 states the following:

The use of an optical slide standard is recommended because it helps in the standardization of microscopes between laboratories. The microscope slide with fluorescent beads of graded intensity may be used to standardize microscopic fluorescent intensity.

Immuno Concepts and the NCCLS recognize that optimal fluorescent microscopy requires consistent performance of the microscope optical systems. Results obtained with serum reference standards, such as those available from the Center for Disease Control, Atlanta, Georgia, may be useful indicators of changes in sensitivity, but they were designed more as guides to identify staining patterns. The performance characteristics of the fluorescent microscope itself are an important factor in the evaluation of fluorescent intensity and in the subsequent assessment of sensitivity. Comparison of fluorescent staining intensities on fluorescent microscopes requires the use of quantitative standards that have the same fluorescent spectra as the cells used in the FITC test procedures.

The FITC QC Slide™ permits daily monitoring of microscope performance and comparison of test results requiring fluorescent microscopy, independent of the assay system. In addition, these reference slides serve as a convenient and sensitive check on field illumination uniformity, as well as stability of the illuminator source. It is highly recommended that these slides be used in conjunction with specific antibody reference standards such as those from the CDC or WHO. The relative brightness of cells stained in FITC test procedures can be compared to these reference microbeads.

The Immuno Concepts FITC QC Slide™ contains five levels of fluorescent microbead standards. The immobilized microbeads contain uniform levels of fluorescein isothiocyanate (FITC) standardized to demonstrate the same excitation and emission spectra as fluorescence read from cells complexed with fluorescent antibody conjugates. The intensities stated were set in our laboratory in collaboration with several leading laboratories worldwide. The stated intensities may differ from yours. To be assured of a minimum threshold of sensitivity with your fluorescent microscope system, the endpoint of positive staining should be observed with the microbeads on the 1+ or +/- wells.

For additional information on the FITC QC Slide™, or other Immuno Concepts products, visit our web site at [www.immunoconcepts.com](http://www.immunoconcepts.com) or contact your Immuno Concepts distributor.

FITC QC Slide™

Catalog # 1900



[www.immunoconcepts.com](http://www.immunoconcepts.com)

ISO 9001 Certified Quality System